

CrossView™ 1.1

Quick Start Guide

A-Prime Software Customer Support:

support@aprimesoftware.com

1-877-MAP DOWN (1-877-627-3696)

A-Prime Software, 1600 Broadway, Suite 2400, Denver, Colorado 80202

Copyright © 2008 A-Prime Software

All rights reserved.

Second edition 2008 (*Revision 2, addressing ArcGIS Desktop 9.1, 9.2, and 9.3*)

The information contained in this document is subject to change without notice. A-Prime Software reserves the right to revise and improve its products as it sees fit. This publication describes the state of this product at the time of its publication, and may not reflect the product at all times in the future.

The information contained in this document is the exclusive property of A-Prime Software. This work is protected under United States copyright law and the copyright laws of the given countries of origin and applicable international laws, treaties, and/or conventions. No part of this work may be reproduced or transmitted in any form or by any means, electronic or mechanical, including photocopying or recording, or by any information storage or retrieval system, except as expressly permitted in writing by A-Prime Software. All requests should be sent to Attention: CrossView Product Manager, A-Prime Software, 1600 Broadway, Suite 2400, Denver, Colorado 80202, USA.

A-Prime Software makes no warranty, either express or implied, including but not limited to any implied warranties of merchantability or fitness for a particular purpose regarding these materials, and makes such materials available solely on an “as-is” basis.

In no event shall A-Prime Software be liable to anyone for special, collateral, incidental, consequential or any other kind of damages in connection with or arising out of purchase or use of these materials. The sole and exclusive liability of A-Prime Software, regardless of the form of action, shall not exceed the purchase price of the materials described herein.

All use, modification, reproduction, release, performance, display or disclosure of the commercial computer software shall be in strict accordance with the End User License Agreement (EULA).

Trademarks:

A-Prime Software, CrossView, and www.aprimesoftware.com are trademarks, registered trademarks, or service marks of A-Prime Software in the United States, the European Community, or certain other jurisdictions. Such rights are reserved under the laws of the appropriate jurisdiction. Other companies and products mentioned herein are trademarks or registered trademarks of their respective trademark owners. In particular, ESRI, ArcGIS, ArcGIS Desktop, ArcView, ArcInfo, ArcMap, and ArcCatalog are trademarks, registered trademarks, or service marks of ESRI in the United States, the European Community, or certain other jurisdictions.

U.S. GOVERNMENT RESTRICTED/LIMITED RIGHTS:

Any software, documentation, and/or data delivered hereunder are subject to the terms of the End User License Agreement (EULA). In no event shall the U.S. Government acquire greater than RESTRICTED/LIMITED RIGHTS. The data and technical data is commercial in nature. At a minimum, use, duplication, or disclosure by the U.S. Government is subject to restrictions as set forth in FAR §52.227-14 Alternates I, II, and III (JUN 1987); FAR §52.227-19 (JUN 1987) and/or FAR §12.211/12.212 (Commercial Technical Data/Computer Software); and DFARS §252.227-7015 (NOV 1995) (Technical Data) and/or DFARS §227.7202 (Computer Software) and other related provisions, as applicable. Contractor/Manufacturer is A-Prime Software, 1600 Broadway, Suite 2400, Denver, Colorado 80202, USA.

A-Prime Software Customer Support:
support@aprimesoftware.com
1-877-MAP DOWN (1-877-627-3696)

Table of Contents

Software Activation Notice	4
CrossView™ Installation	5
CrossView™ Activation	9
• Activate Later (21-Day Free Evaluation Activation)	9
• Internet Activation	10
Add the CrossView™ Toolbar to ArcMap	14

A-Prime Software Customer Support:
support@aprimesoftware.com
1-877-MAP DOWN (1-877-627-3696)

SOFTWARE ACTIVATION NOTICE:

To activate CrossView™ for a **free 21-day evaluation period**, please install the CrossView software (see pages 5-8 in this *Quick Start Guide*), and then select the “Activate later” option as discussed on page 9 of this *Guide*.

To activate CrossView™ with a **License Number** you receive **after purchasing the software**, please install the CrossView software (see pages 5-8 in this *Quick Start Guide*), then select the “Internet Activate” option as discussed on page 10 of this *Guide*, and continue following the instructions on pages 10 and 11.

CrossView™ Installation

Due to significant differences between the 9.x versions of ESRI's ArcGIS Desktop software, you have been provided with three (3) CrossView™ installation executable files, each designed to be used with the appropriate version of ArcGIS Desktop:

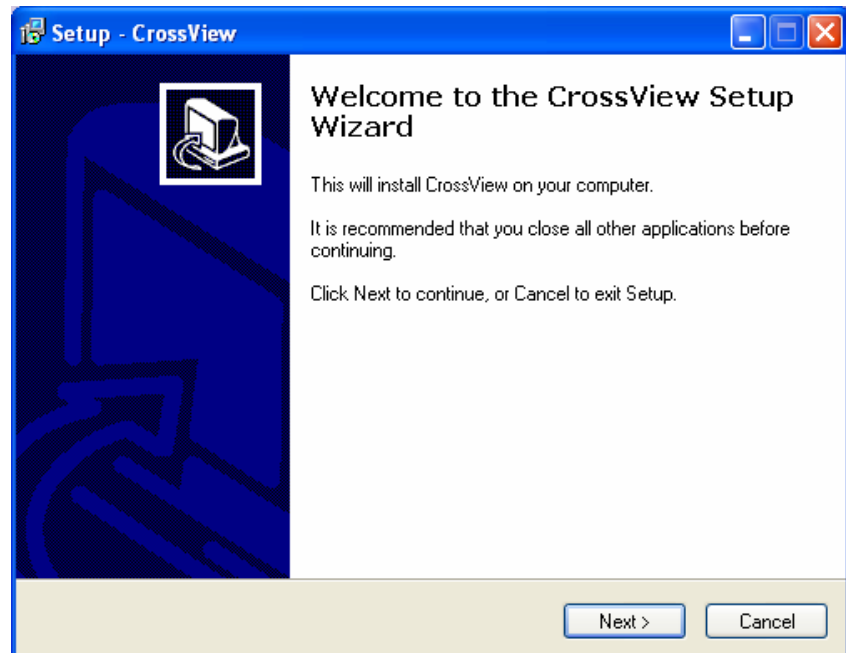
<u>ArcGIS 9.x Version</u>	<u>Appropriate CrossView Executable</u>
9.3	CrossView1.1_SetUpForArcGIS9.3.exe
9.2	CrossView1.1_SetUpForArcGIS9.2.exe
9.1	CrossView1.1_SetUpForArcGIS9.1.exe

Depending on the version of ArcGIS 9.x that you are using, you must use the appropriate CrossView installation executable on your PC. Regardless of which version of the executable you run, the following installation steps must be followed:

- (1) Close all applications running on your PC, including any instances of ESRI's ArcGIS Desktop applications.
- (2) If applicable, uninstall any previous version of CrossView.
- (3) If you have not already done so, extract the appropriate installation executable file from the ZIP file you downloaded or received after purchasing CrossView. Place the executable file appropriate to your version of ArcGIS Desktop 9.x in a local directory on your PC.

- (4) Run the appropriate executable file. The CrossView Setup Wizard popup window appears. Click the "Next" button to continue with the installation, or click the "Cancel" button to exit the Setup Wizard.

WARNING:
You **MUST** have
"Administrative"
privileges on your
PC to install
CrossView.



In the next Setup Wizard window, read the CrossView End User License Agreement (EULA). **You must accept the terms of this agreement before continuing with the installation.**

If you accept the EULA, click the “I accept the agreement” radio button, and click the “Next” button to continue.

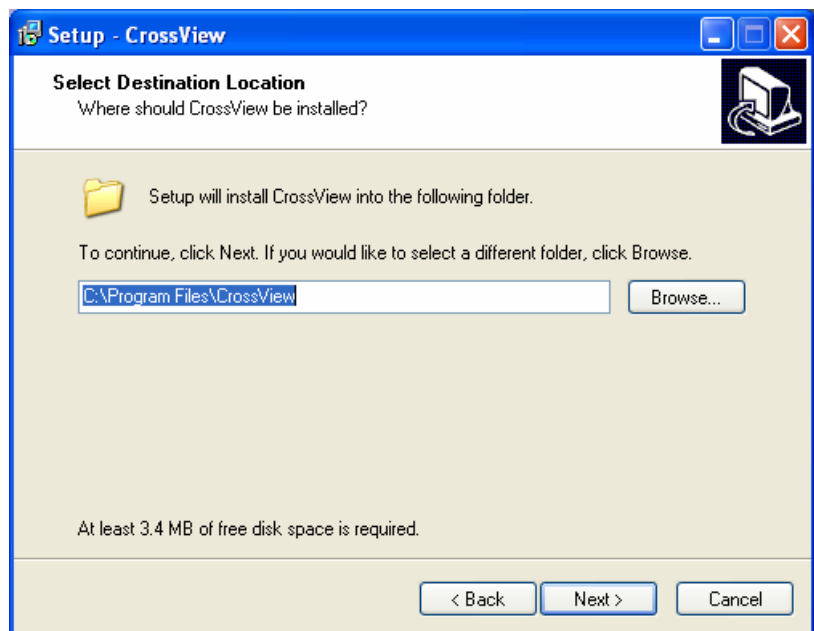
If you do not accept the EULA, leave the “I do not accept the agreement” radio button selected (it is selected by default), and click the “Cancel” button to exit the Setup Wizard.



- (5) In the next Setup Wizard window, browse to and select the folder in which CrossView is to be installed.

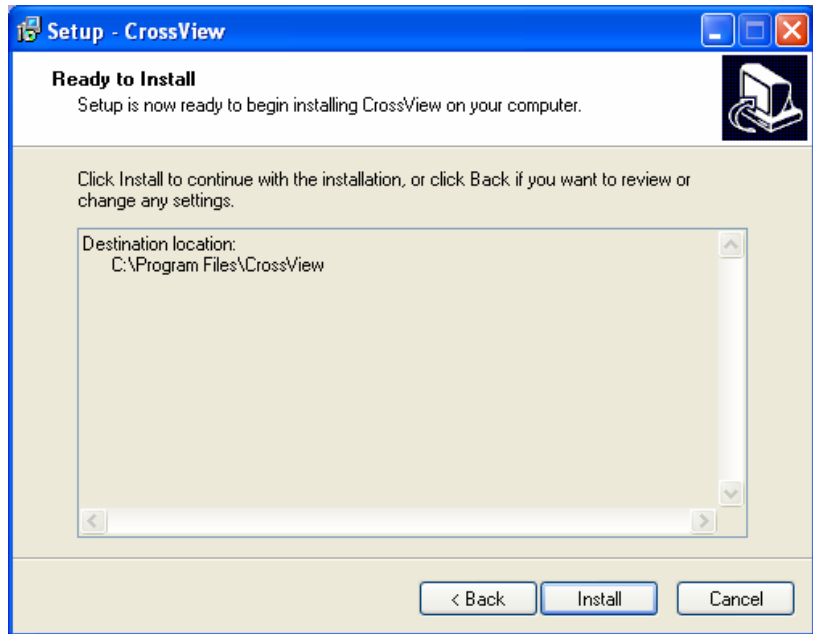
The “C:\Program Files\CrossView” folder is the default installation location.

Note:
*CrossView requires at least **3.4 MB** of disk space. Once the appropriate installation folder has been selected, click the “Next” button to continue.*



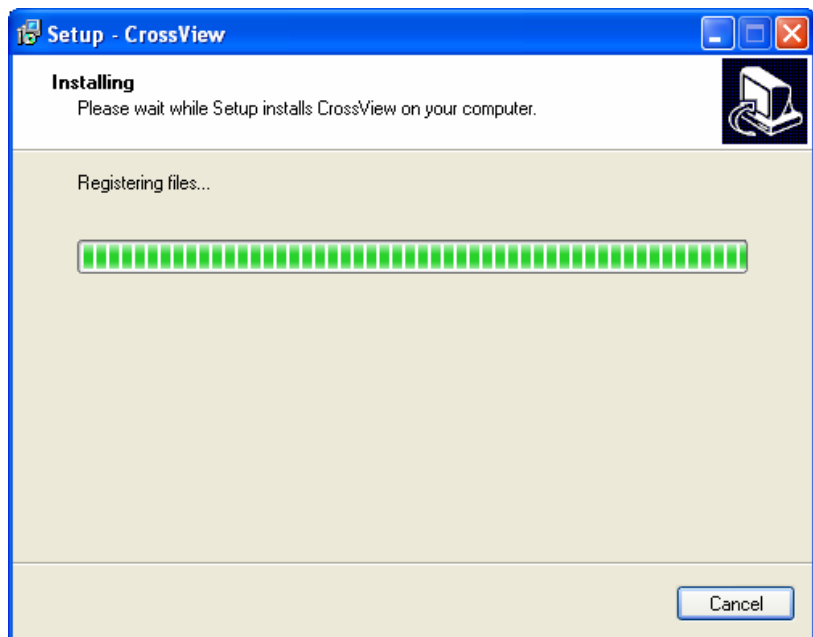
- (6) In the next Setup Wizard window, verify that the installation destination folder is correct and click the “Install” button.

If you need to change the installation location, click the “Back” button to go back to the previous Setup Wizard window.



- (7) The next Setup Wizard window displays the installation progress bar, and lists the specific installation tasks being performed.

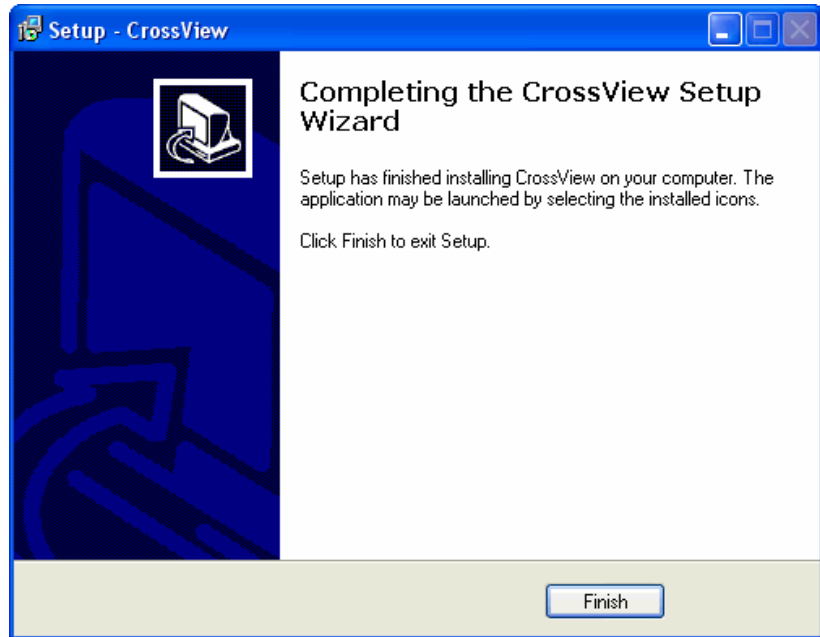
On most PCs, the CrossView installation takes just a few seconds. If you need to cancel the installation, click the “Cancel” button.



Note:
You will be directed automatically to a **software activation window** when CrossView’s software installation process is complete.

Regardless of how you choose to activate the software during this session (see **Software Activation** below), the final Setup Wizard window appears **after** the activation steps are completed (see screenshot at right).

Click the “Finish” button to exit the CrossView Setup Wizard.



CrossView™ Activation

Once software installation has finished, the “Control Activation” popup window appears.

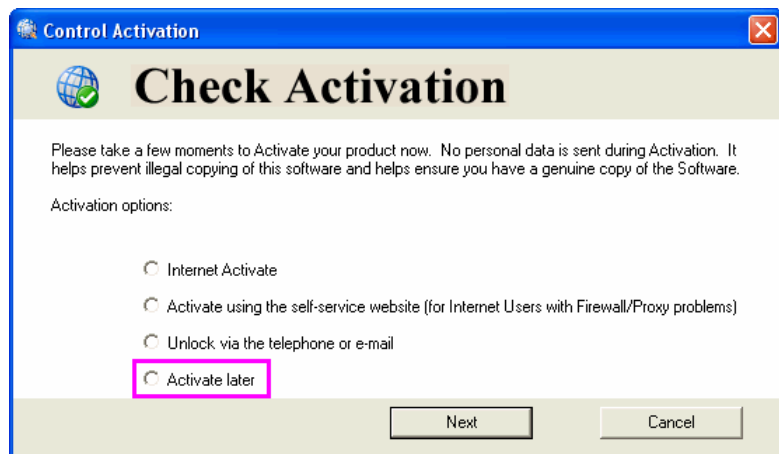
If you wish to activate CrossView for a **Free 21-day Software Evaluation**, please use the “Activate later” option (discussed immediately below).

If you have purchased CrossView, you will need to use one of the other the three activation options. This **Quick Start Guide** discusses the “Internet Activate” option – the simplest and fastest means to activate CrossView (see the following page).

1) Activate Later (21-Day Free Evaluation Activation)

On the Control Activation window, click the “**Activate later**” radio button, and then click the “Next” button.

The Control Activation window closes, and CrossView has been activated for a **21-day Free Evaluation Trial**.

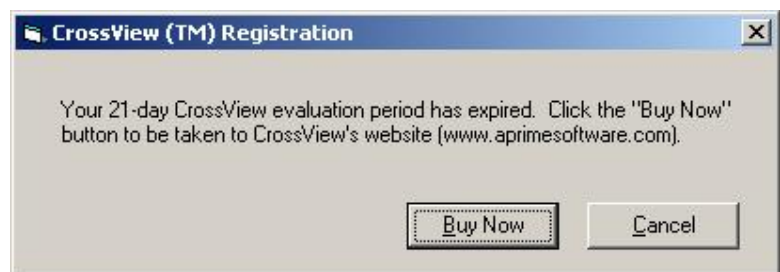


IMPORTANT: Most Software Evaluation users find that completing the **CrossView Use Case Exercise** (in conjunction with the included Sample Dataset) is the quickest and easiest “next step” to learning about CrossView and its capabilities.

Note:

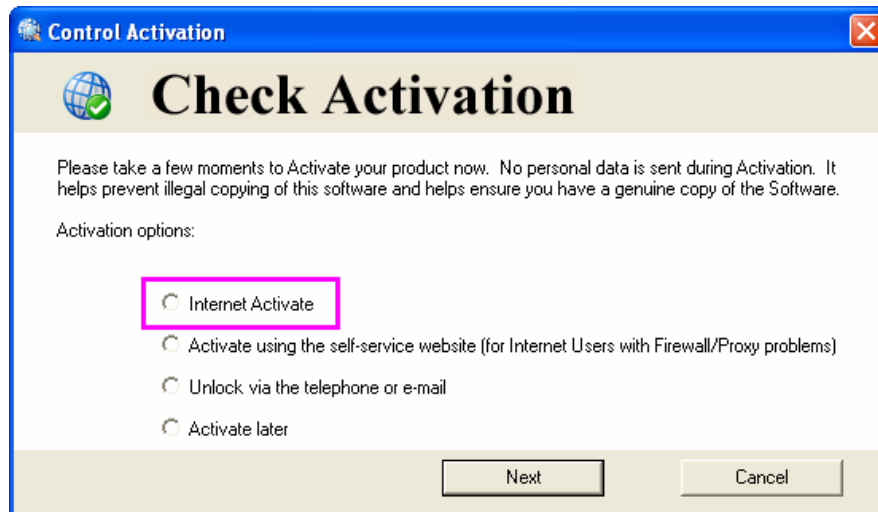
When the 21-day software evaluation is over, the popup message at right appears when you click on the CrossView Dialog Window button to start the software. To continue using

*CrossView, you must purchase the software and activate it using the ‘Internet Activation’ option (see (2) below), or one of the other permanent activation options detailed in the **CrossView Installation Instructions and License Manager Guide**. Clicking the “Buy Now” button opens your internet browser and takes you to the CrossView purchase page on the CrossView website (www.aprimesoftware.com). Clicking the “Cancel” button dismisses the popup message.*



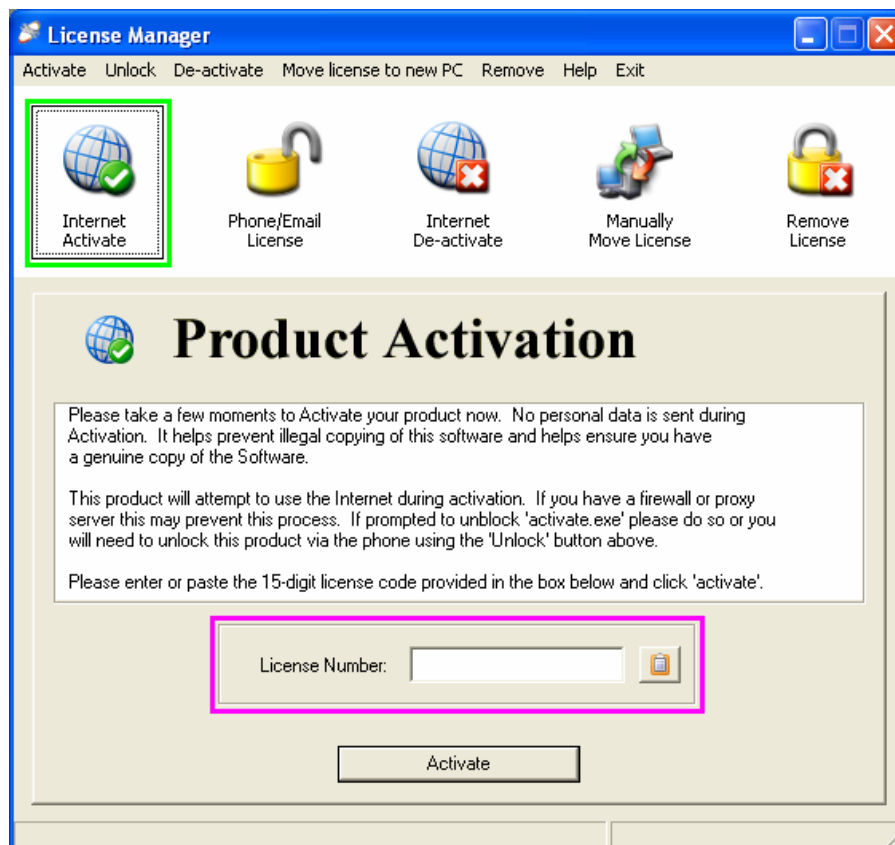
2) Internet Activation

- (A) On the Control Activation window, click the “**Internet Activate**” radio button, and then click the “Next” button.



The License Manager utility dialog window appears.

- (B) When the License Manager utility is launched, you are taken by default to the “Product Activation” Tab.



In the “License Number” field near the bottom of the Tab, enter the 15-digit **License Number** you received after purchasing CrossView.

Note:

If you “copy” this code from a document or email on your PC, you may use the optional “Clipboard Paste” button next to the field to paste it automatically.

- (C) Click the “Activate” button.

The License Manager interacts automatically with an activation server via the internet.

Once your License Number is verified, your CrossView software is activated without any further action on your part.



IMPORTANT:

Most new users find that completing the **CrossView Use Case Exercise** (in conjunction with the included Sample Dataset) is the quickest and easiest “next step” to learning about CrossView and its capabilities. After completing the Use Case Exercise, the **CrossView Requirements** and **CrossView User Guide** documents typically provide the best help for most users.



PROBLEMS WITH ACTIVATION ?

If you use a Proxy Server to access the Internet, please see the “*Special Proxy Server Notes*” on the following pages. Otherwise, please see the **CrossView Installation Instructions and License Manager Guide**. This contains detailed information about all the different ways you can activate your CrossView software, as well as each of the License Manager utility’s functions. If this guide fails to address your problem, please e-mail or call Customer Support:

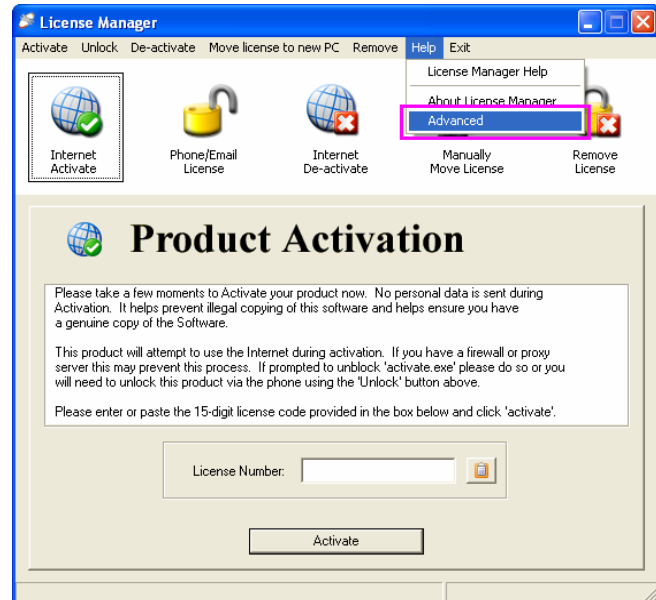
support@aprimesoftware.com
1-877-MAP-DOWN (1-877-627-3696)

Special Proxy Server Notes:

If you use a Proxy Server to access the Internet, it may prevent automatic web-based activation. You may still be able to activate your software automatically via the web, however, by entering the appropriate Proxy Server parameters into the License Manager utility. To enter Proxy Server parameters into the License Manager utility, do the following:

1. In the License Manager window, click on the “Help” drop-down menu, and select the “Advanced” option (see screenshot below).

This opens the Proxy Settings window.

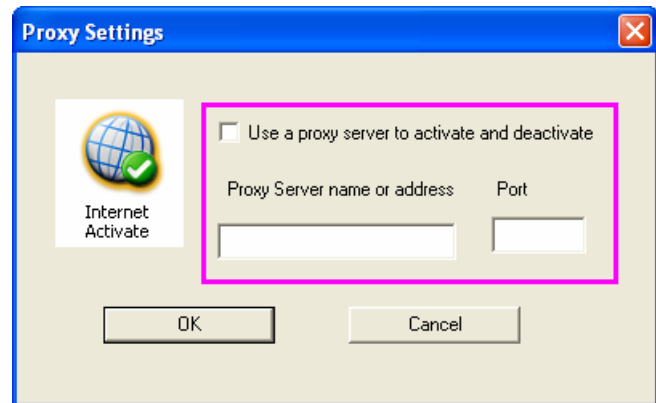


2. In the Proxy Settings window:

- Check the “Use a proxy server to activate and deactivate” checkbox.
- Enter the appropriate “Proxy Server name or address.”
- Enter the appropriate “Port” number.
- Click the “OK” button.

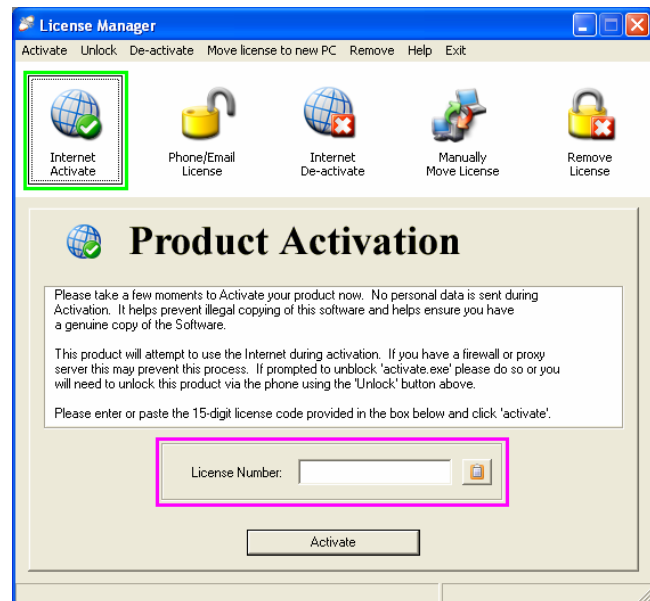
Note:

You may need to contact your IT department for the appropriate Proxy Server parameters.



3. Back in the License Manager window, select the “Internet Activate” option (see screenshot below) to return to the “Product Activation” Tab.

To activate your CrossView software, return to steps (B) and (C) in the Internet Activation process described above.



Add the CrossView™ Toobar to ArcMap

Once CrossView has been installed and activated, it may be used from within the ArcGIS Desktop ArcMap application.

To do this, first open an ArcMap session on the desktop. Next, add the CrossView toolbar to ArcMap as follows:

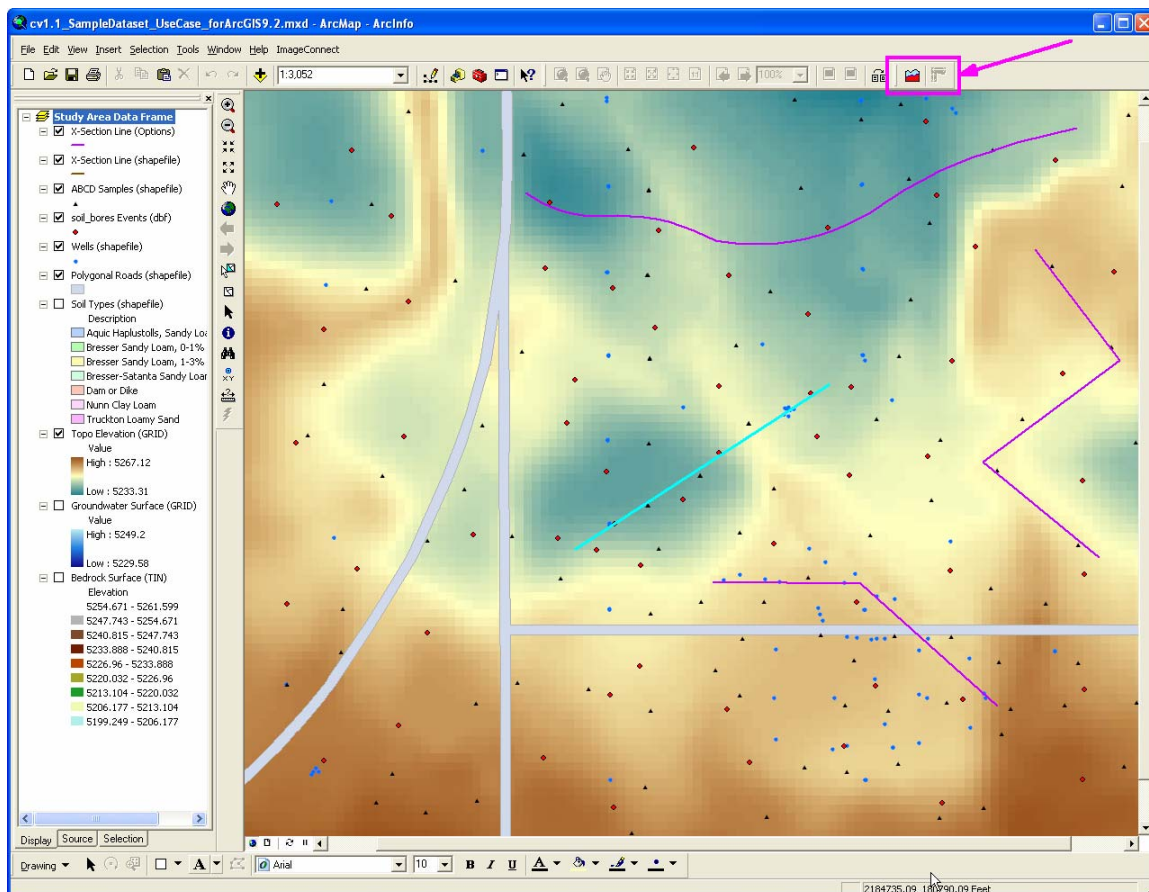
- (1) Right-click on any ArcMap toolbar or in any blank area of the toolbar or menu areas. The ArcMap toolbar popup list will display.
- (2) Select (check the “CrossView” selection on the toolbar list. The toolbar for Crossview appears in the ArcMap environment.
- (3) This toolbar contains two icons, and as with any other toolbar in ArcMap, is dockable and can be placed in the ArcMap window wherever it is most convenient.



The dockable, popup CrossView toolbar:



The docked CrossView toolbar:



- (4) Assuming that the requirements for CrossView are met, the CrossView dialog window can be opened for use.

IMPORTANT:

Most new users find that completing the ***CrossView Use Case Exercise*** (in conjunction with the included Sample Dataset) is the quickest and easiest “next step” to learning about CrossView and its capabilities. After completing the Use Case Exercise, the ***CrossView Requirements*** and ***CrossView User Guide*** documents typically provide the best help for most users.